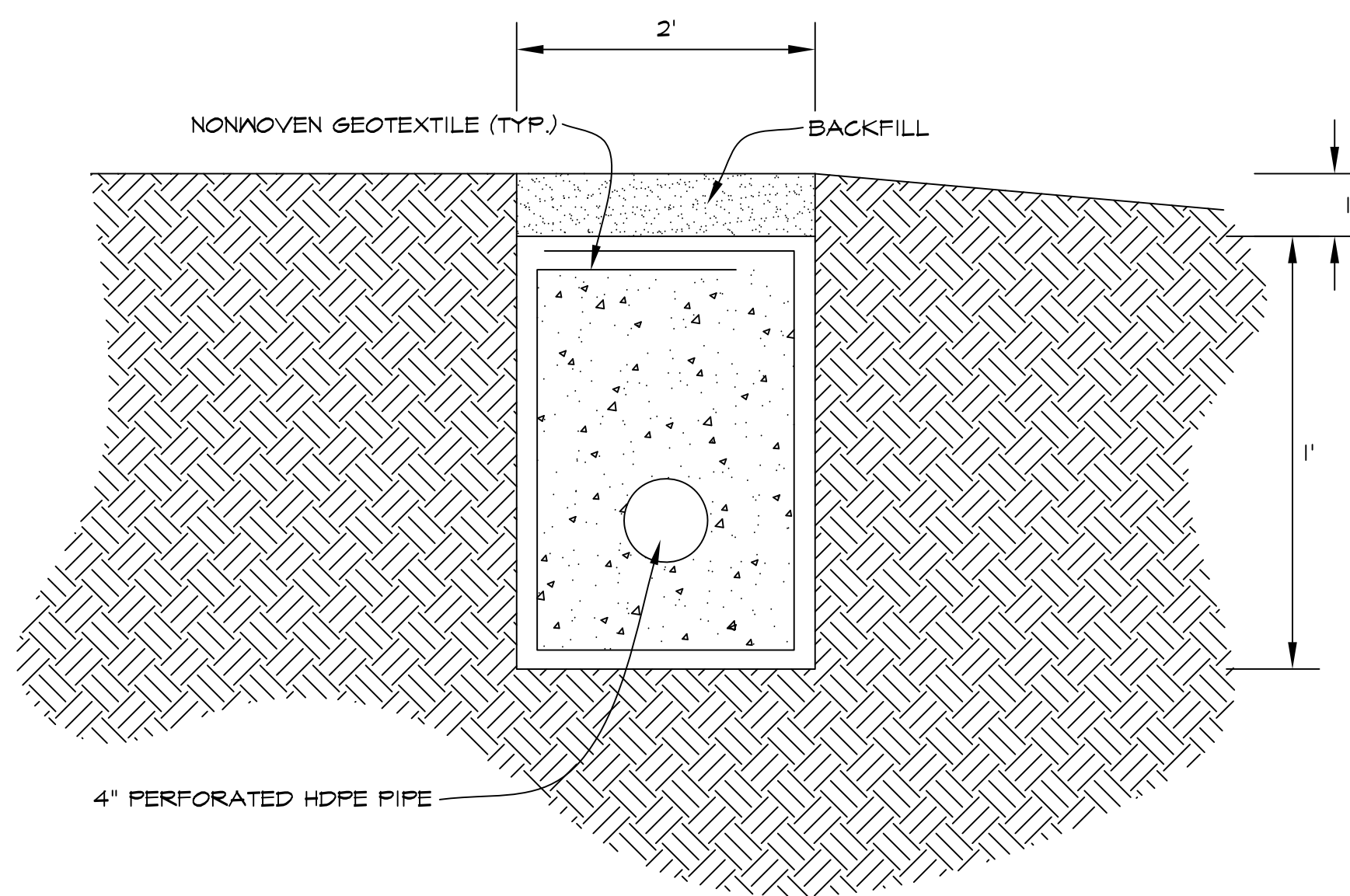
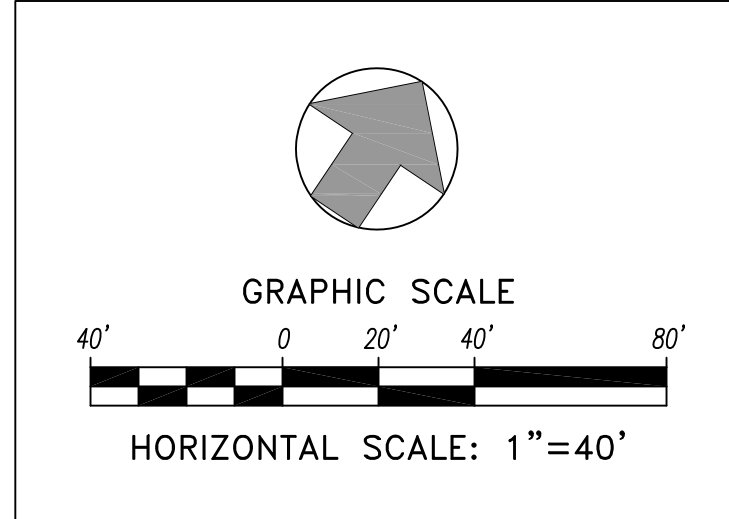
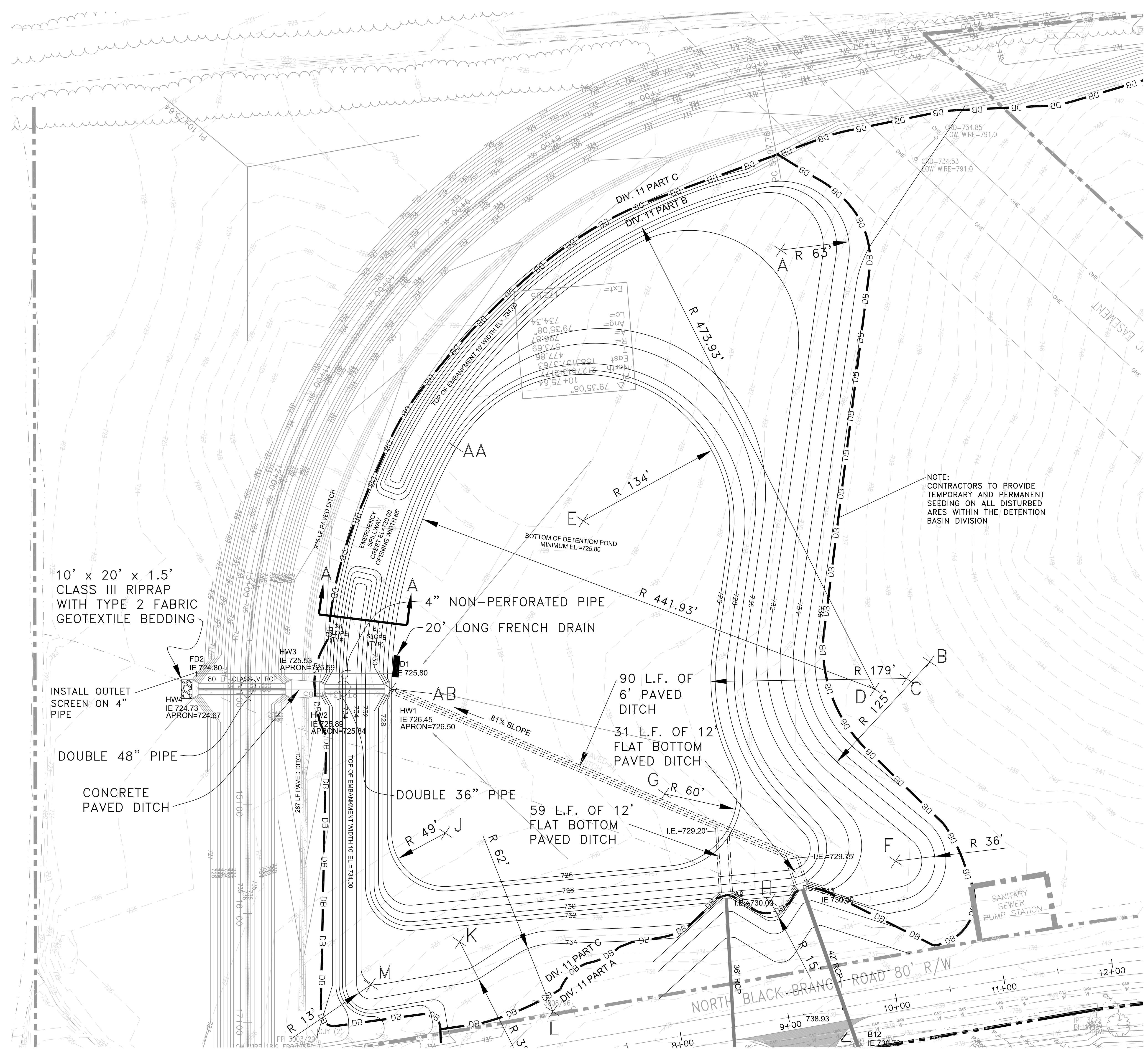


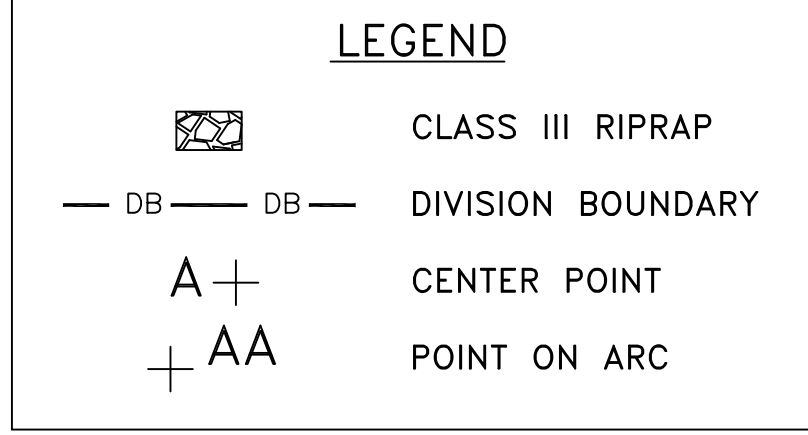
JUL 30 XA 2064-25 FLEX FILM - ELIZABETHTOWN TJ PATTERSON INDUSTRIAL PARK, C-2066 STORM WATER DETENTION BASIN.DWG



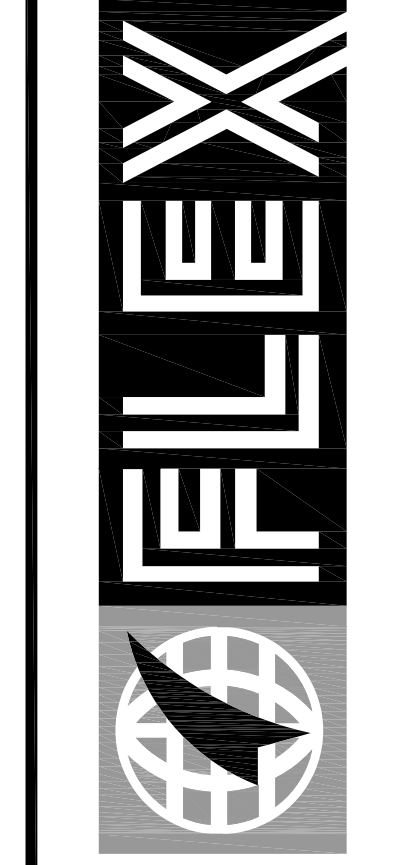
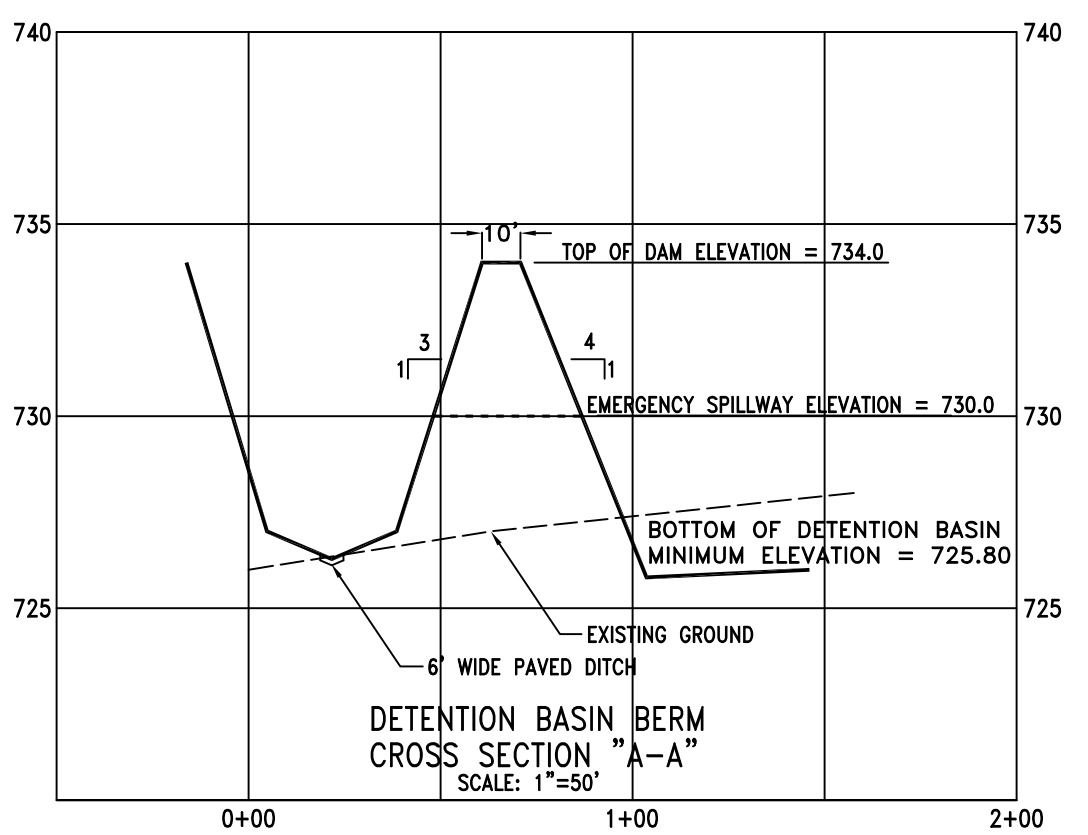
NOTES:
 1. PROTRUDING EDGES OF GEOTEXTILE SHOULD BE OVERLAPPED A MINIMUM OF 1 FT. TO ENSURE COMPLETE COVERAGE OF UNDERDRAIN WIDTH.
 2. TYPICAL TRENCH DIMENSIONS ARE 2 FT. WIDE BY 2 FT.

LOCATION	RADIUS CENTER	
	NORTHING	EASTING
A	2127221.0512	1583584.8520
B	2127483.8604	1583907.9500
C	2127459.2580	1583898.7016
D	2127435.0892	1583879.9160
E	2127414.7674	1583572.6558
F	2127314.9046	1583983.2564
G	2127248.5503	1583773.6926
H	2127220.6593	1583908.3479
J	2127107.1338	1583626.5747
K	2127051.7021	1583692.9611
L	2127026.0268	1583799.3702
M	2126953.7860	1583647.3618

LOCATION	POINT ON ARC	
	NORTHING	EASTING
AA	2127405.9242	1583438.9479
AB	2127189.3318	1583512.6194



NOTE: THERE IS NO LOCATION I.



FLEX FILM (U.S.A.) INC.
 1221 NORTH BLACK BRANCH ROAD
 ELIZABETHTOWN, KENTUCKY 42702

PROJECT L-12 BOPET U.S.A.

DATE	REVISION	BY

PROJECT NO. 2064-25
DESIGNED BY G.A.R.
DRAWN BY J.R.M.
CHECKED BY G.A.R.
REVIEWED BY G.A.R.
DATE JUNE 2011
SCALE AS SHOWN

nsc
 OF KENTUCKY, INC.
 624 Wallington Way
 Lexington, KY 40503
 www.nscinc.com
 Phone: (859)223-5664
 Fax: (859)223-2607

DRAWING NO.
UFL-L12
C-206

STORM WATER DETENTION BASIN